

Annual Report

2020

CHARITY INFORMATION

TABLE OF CONTENTS

A Message to our Supporters **2**

Achievements at a Glance **3**

Our International Supporters and
Funders **4**

Our Mission **5**

Our Programmes **7**

The FAPE Team **8**

Centre Amane **9**

Foster Care **19**

Bidya Kawiya **22**

The Way **24**

Capacity Building **26**

Advocacy **27**

Volunteers **28**

Identifiant Inscription CNSS

9898993

Identifiant a la Taxe Professionnelle

49412742

Registered and Principal Office

Ave 20 Août N. 538. Agafay,
Taroudant 83000



<https://www.amane-fape.com>



fondation.amane@gmail.com



@fondationamane



عام 2020

سنة 2020 كانت سنة جد صعبة، تميزت بجائحة كوفيد 19 والتي كان لها أثار وخيمة على جميع الدول، فالجميع شهد نمطا من الخوف والجزع وعدم اليقين والمضي نحو المجهول. وقد كانت الأسر والأطفال في مركز أمان من الفئات المتضررة أكثر سواء من جراء الجائحة او من جراء التدابير والإجراءات الاحترازية المتخذة من طرف السلطات العمومية لمواجهة هذه الأزمة.

فمنذ إعلان حالة الطوارئ الصحية مساء الجمعة 20 مارس 2020، حرص مركز أمان على الاستمرار في تقديم الدعم ومواكبة الأسر والأطفال طيلة هذه الأزمة حيث تم تكييف برامجهم لتتماشى وتحترم الإجراءات والتدابير المنجزة من طرف السلطات العمومية، كما حرصنا على توفير الإمكانيات اللازمة لفريق العمل لإنجاز مهامهم.

قام فريق المركز بمبادرات ذات الصبغة الاستعجالية لمواجهة الوضع الاستثنائي الذي تعيشه الأسر والأطفال والاستجابة لحاجياتهم لضمان الحماية والعيش الكريم، حيث تدخل الفريق في مجالات مختلفة. فنظرا لتوقف المدارس ورغم تقديم المؤسسات التعليمية لدروس تعليمية عن بعد فقد حرمت الأسر والأطفال في مركز أمان من هذه الفرصة لعدم توفرهم على الإنترنت والأجهزة الضرورية لمواكبة هذه البرامج. ولهذا ولضمان تمكين الأطفال من هذه الخدمات المقدمة من طرف المؤسسات التعليمية، عمل فريق مركز أمان على توزيع لوحات الكترونية وتوفير الإنترنت للأطفال لتتبع دروسهم المقدمة من طرف المدارس عبر التعلم عن بعد، كما قدم أعضاء الفريق أنشطة موازية وداعمة عن بعد.

وقد اتاحت هذه الأجهزة استمرار التواصل مع الأسر والأطفال عن بعد والقيام بمجموعة من الحصص الاستماع والدعم النفسي للمستفيدين، خصوصا لظهور مشاكل نفسية جد معقدة بشكل كبير أثناء وبعد الحجر الصحي. وموازة مع توزيع اللوحات وتوفير الإنترنت عمل الفريق على إنجاز برامج للأطفال لحمايتهم من المخاطر المتزايدة التي سيواجهونها وهم يقضون وقتا أطول على شبكة الإنترنت.

كما أن توقف الأمهات عن العمل كرس سوء التغذية للأطفال، ولعدم وجود فرص للأسر بديلة لتلبية حاجياتهم من التغذية والسكن (أداء الأكرية)، وبعد تشخيص الوضعية من طرف فريق العمل. فقد عمل مركز أمان على التدخل لتوفير التغذية عبر توزيع قفف مواد التغذية للأسر وأداء الأكرية حسب حاجيات كل أسرة.

أثناء الحجر الصحي المفروض على الأسر، تزايد مستوى إجهاد الأمهات والأسر وتزايد معه حوادث العنف المنزلي والاعتداءات على الأطفال الواضحة من عدد التبليغات ونوعها المتوصل بها من طرف الفريق في هذه الفترة. وقد عمل الفريق عبر مواكبة الأسر عن بعد أو عبر التنقل في بعض الأحيان رغم الحضر للتدخل بشكل مباشر لإيجاد حلول حسب المتوفر من الإمكانيات. وقد كان لهذه التدخلات أثر كبير في حل مجموعة من الوضعيات وحماية الأسر والأطفال من الأسوأ (كالانتحار مثلا).

وهنا لابد من الإشادة بالحس الاحترافي الكبير، الذي أبان عنه فريق عمل مركز أمان. وكذا قدرتهم على مواكبة الأسر والأطفال رغم العقبات الكبيرة المواجهة في الأزمة وكذا درجة تواصلهم وتحسيسهم للأسر لوصول الى درجة كبيرة من التزام الأسر بإجراءات وتدابير حالة الطوارئ الصحية المعتمدة بالمدينة. وفي الأخير أود أن أشكر الشركاء الداعمين لمركز أمان على كل ما قدموه من دعم في هذه الأزمة وأحيي كذلك السلطات العمومية والفاعلين المؤسسيين على تعاونهم وتجاوبهم مع تدخلات فريق العمل في هذه الفترة.

امضاء :
عبد الله سوسي

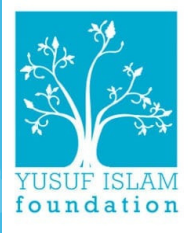


With Gratitude,
Mr. Abdellah Soussi
President

Fondation Amane pour Protection de l'Enfance

OUR PARTNERS & SUPPORTERS

Thank you to our major funders, supporters, international businesses, and donors who have contributed to our organisation. Because of your generosity we can support the most vulnerable in Morocco.



OUR 10 YEAR PARTNER

Since 2010, the FAPE has worked closely with its UK partner, **The Moroccan Children's Trust (MCT)**. Our unique partnership with MCT provides International expertise and knowledge in all of our projects. Together, we share a vision in developing systems to protect children from violence and neglect.

MCT began working with us from Centre Amane, a social centre in Taroudant. Together, we have gained international and national recognition for our work in child protection. MCT staff along with

FAPE social workers collaborate with local actors and government leaders in child protection. A participatory approach shapes the ways we work with local stakeholders when:

- designing and implementing project ideas; and understanding the needs of children and families,
- gaining support and expertise of local professionals such as judges, lawyers, teachers, and health professionals,
- seeking long-term impact through policy change.

ACHIEVEMENTS AT A GLANCE

737

PEOPLE SUPPORTED
THROUGH LIFE
CHANGING SOCIAL
WORK

87 Direct Adults

90 Direct Children

560 Community Members
People and family members
connected to our beneficiaries

44

LOCAL,
NATIONAL,
AND
INTERNATIONAL
PARTNERS

PROVIDED TARGETED
CHILD PROTECTION
TRAINING TO

764

LAWYERS
JUDGES
SOCIAL
WORKERS
COMMUNITY
LEADERS
SOCIAL
PROFESSIONALS
DOCTORS

629

MEETINGS WITH
STAKEHOLDERS

139 meetings with **authorities** and
132 with members of **tribunal**.

344

FAMILIES
RECEIVED COVID
RELIEF FOOD
PACKAGES TO

OUR VISION & MISSION

Our vision is to create a **safe and fulfilling environment** in which vulnerable children are able to **thrive and grow**; a Morocco in which children and families living in poverty or disadvantage can count on effective and appropriate support to help them realise their potential. To achieve this we will continue work in three key areas at the local level: **social work** with vulnerable children and their families; **development of child protection systems** throughout the region; and supporting the **improvement of the national birth registration system**.


Our mission is to support and improve conditions for vulnerable children and their families in Morocco. We draw upon both Moroccan and international expertise in social work, paediatrics, education, safeguarding and children's rights, and our work continues to play an important role in shaping Morocco's newly established child protection system.

A Moroccan Civil Society Organisation that works to uphold and to protect the rights of all Moroccan children

OUR OBJECTIVES

We draw on Moroccan and international expertise in social work, paediatrics, education, safeguarding, and children's rights in order to fulfill FAPE's major objective which is to **promote and provide social support for children and families**. Our work hopes to contribute to the **development of a robust and strong child protection system in Morocco**. Our vision is for an environment where children are protected against all forms of abuse and is hinged on 5 objectives that contribute to:

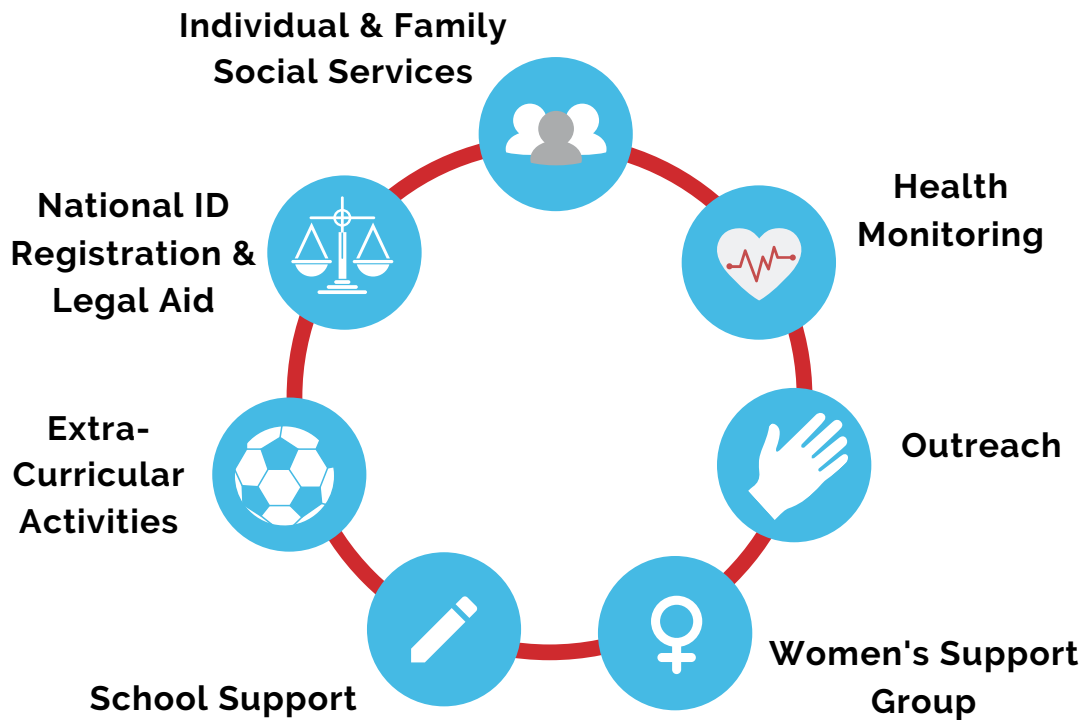
- 1** The creation of a Child Protection System in Morocco.
- 2** Advocating for and working towards the structural and individual changes required for Deinstitutionalization.
- 3** Promoting and Providing Foster Care.
- 4** Ensuring Civil Registration remains a general right of every Moroccan Citizen.
- 5** Providing the template for a Children Protection Centre through services and practices of Centre Amane.



Lalla Zahra has served as the unofficial "mother" of Centre Amane since the centre opened 10 years ago.

*"I will never forget to what extent my life changed after I worked at Centre Amane. It has become a part of my life. I never imagined that I would have the ability to help others and contribute to other families' successes the way I have been able. I am happy that I belong to such an amazing team that always supports the work I do, and I **am so delighted to serve the children** hoping that my giving will never be drained."*

Our Programs



Centre Amane



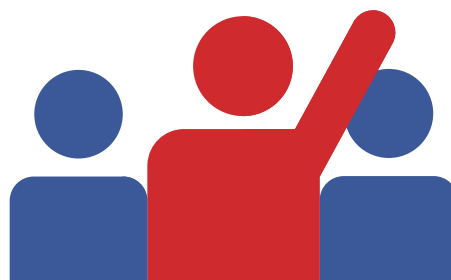
Foster Care



Bidaya Kawiya



The Way



Capacity Building, Advocacy, & Research

Governance



Abdellah
Soussi



Abdellah
Lamine



Hicham
Ouaha



Youssef
Ztaoui

Centre Amane



Fatima Ait
Bella



Mohamed Rida
Lagroubi



Hamid
Idbelaid



Maryamme
Mazzaourou



Slimane
Amansag



Mailka
El Alaoui



Hasna Ben
Arreg



Zahra
Aabid



Zeina
Ahoukar

Foster Care



Mattie
Khoory



Hind
El Jadid



Thorayya
El Aouad

Bidaya Kawiya



Hasnae
Aamaimi



El Houssaine
Bidouh



Lahcen
Boucharb

The Way



Chaymae
Akchat



Kaoutar Ait
Oumghar



Jesse
Lewellyn



Hasna
Jabha



Younes
Marmouchi



Tarik
Azrhirh

CENTRE AMANE: Social Work

FAPE supports Centre Amane programmes for children and families in difficult circumstances to ensure caregivers have the capacity to care for their children independently. We believe in **deinstitutionalisation**, the idea that children thrive best in safe and loving homes –not residential centres. Through **safeguarding** practices we keep families together by providing the support required for them to stay together. Therefore, **each case at Centre Amane always involves the whole family.**

45 CHILDREN

21 | 24
GIRLS | BOYS

37

WOMEN AND MEN
IN OUR PROGRAMS

156

INDIVIDUAL
SOCIAL WORK
SESSIONS



Social Work is...

The Five Pillars

Our social work approach is about ensuring we provide a collection of **holistic** social services. We build on the principals of **relational** social work and ensure there are clear **transitions** from our entry points to our exit points. This is framed by being **child-centred** and family-focused and always ensuring to be **professional** in our practice by respecting best practices in child protection regarding confidentiality, transparency, and accountability.

Meets international standards for wellbeing and equality

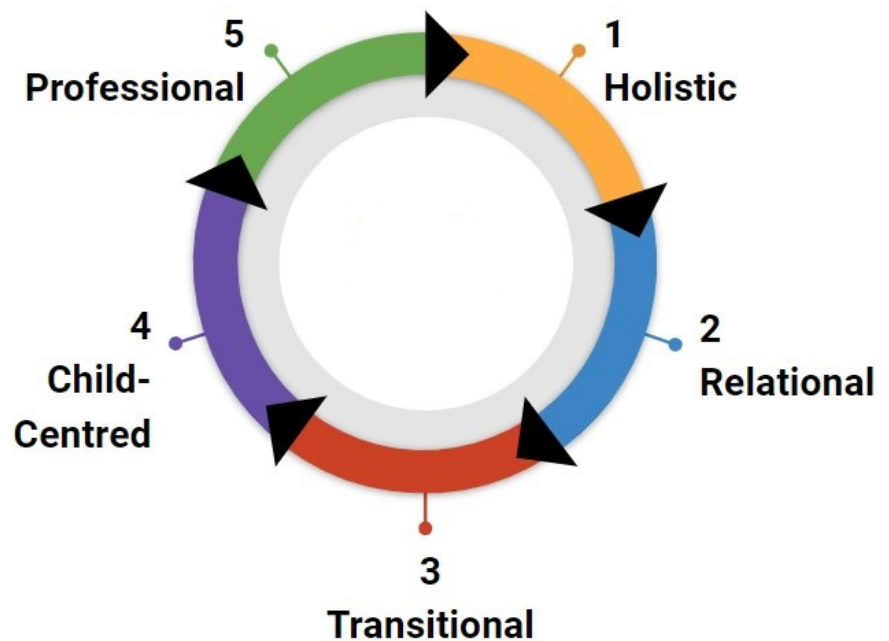
Following the standards set by the **UN Convention of the Rights of the Child**, FAPE adheres to a strict child protection and safeguarding policy.

Our social work aligns with the **UN Sustainable Development Goals (SDGs)**, most notably in promoting health and wellbeing, quality education, and gender equality.

Sustainability and Collaboration

We innovate and **advocate** for lasting change towards a child protection system that will impact on future generations. The voices of children, families, and all staff members are integral to our work and the heart of our programmes which are **participatory** and strive for evidence-based action.

The Five Pillars



What Sustainable Development Goals do we focus on?

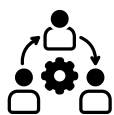


What does our social work look like everyday? >>>

Advocacy & Outreach



Advocacy and outreach are **essential** to conduct the services of Centre Amane. They raise awareness of our services to other child protection professionals and to general community members, including street-connected children and their families. This is vital for our referral system and allows effective collaboration to support plans that take advantage of the formal and informal sectors of the **child protection system in Taroudant**.



Meetings with Local Actors

We conducted 629 meetings with local actors in 2020. While **authorities and tribunals** make up the largest number of meetings, also regularly met with **school directors, other local associations, and the general community**.



Street Work

The COVID lockdown limited the ability of Centre Amane staff to conduct street work or patrols. However, between the months of September and December, once lockdown restrictions were lifted, we were able to conduct 26 patrols throughout Taroudant.



Referrals

In 2020, we processed 137 referrals. Most referrals come from **community members** or **walk-ins**. This shows us that our outreach efforts are making an important impact on the community: Significantly, many of these referrals were a direct result of the community link created through the women's group activities.

629

MEETINGS
WITH LOCAL
ACTORS

26

STREET
PATROLS

137

REFERRALS

Health Monitoring



Monitoring the health of all children and families is a major task of Centre Amani. Social workers connect and often accompany children and families to visit medical practitioners. **This was particularly important during COVID-19.** In 2020, due to COVID-19, Centre Amani was forced to close its doors from March until June. While the physical centre was closed, Centre Amani quickly adapted its services to meet the changing needs of children and families during the pandemic.

Our work would not have been possible without the generosity of our funder, Penny Appeal, which allowed us to reallocate our funds, and UNICEF, which awarded FAPE emergency COVID-19 funding that was able to be used to benefit the children and families of Centre Amani.



FOOD BASKETS

Centre Amani provided food baskets to **86 families**, consisting of **344 individuals**, to meet increased food insecurity.



WHATSAPP FORUMS

Social workers provided ongoing support via WhatsApp forums, reaching **71 women and children.**



PPE

209 individuals were provided with personal protective equipment, such as face masks, gloves, and hand sanitizer.

87

**FAMILIES TO
ACCESS
GOVERNMENT
SUPPORT**

36

**FAMILIES
PROVIDED
RENT
ASSISTANCE**

39

**TABLETS WITH
SIM CARDS
DISTRIBUTED
TO CHILDREN**

Women's Support Group



For 10 years Centre Amane has hosted weekly women's support group with mothers of children at the centre. **In 2020, we moved online** and kept a regular forum for our women's support group members and even gaining more.



A Link to the Community

The Women's Group Supporting Referrals

In late February 2020, our social workers approached a group of **street-connected children**. Through our street work activities, they had regularly seen these children playing in the main square of Taroudant. They appeared **malnourished**, and were regularly begging for money or food.

After asking the children and people in the neighbourhood, we were able to contact their mother, Maryam. Maryam was involved in sex work and regularly used illicit substances. She did not want to work with us and was afraid we would report her to the authorities.

Fortunately, **members of the women's group knew the woman**. When Maryam asked them about Centre Amane, they were able to explain the support she could receive and they convinced Maryam to contact the women's group social worker as she was thinking of abandoning her children.

The women's group supported us to perform a complete family assessment of Maryam and her children. We are slowly integrating the mother into the women's group activities, including the WhatsApp forum. Significantly, we are able to keep the children off the street by opening the centre doors to them every day. They now come to us regularly as they now see it as a **"safe place"** where they can play with other children, eat, be showered, and have their health monitored.

27

REGULAR
PARTICIPANTS

7

WORKSHOPS
(PRE-COVID)

School Support & Activities



Social Integration

Our social workers **liaise with teachers** to support children in their schooling. We also integrate children into **extracurricular activities with local associations**. Centre Amane also offers its own range of activities and support services.



Gaining Additional Perspectives

Survey results from Teachers/Children and Coaches/Children

At the end of 2020, social workers conducted surveys with some of the individuals who provide support to the children at Centre Amane: teachers and coaches. Social workers conducted **34 surveys with students and their teachers** and **9 surveys with children and their coaches**.



Children said...

.... that they enjoy going to school and extracurricular activities.



Teachers said...

... students always come prepared with the necessary materials and arrive on time.

... students are well behaved and get along with other students.



Coaches said...

.... doing the surveys improved their relationship with the social worker and made them want to be more involved in supporting the children with Centre Amane.

67

INFORMAL VISITS

TO LOCAL SCHOOLS

43

SURVEYS WITH TEACHERS AND COACHES

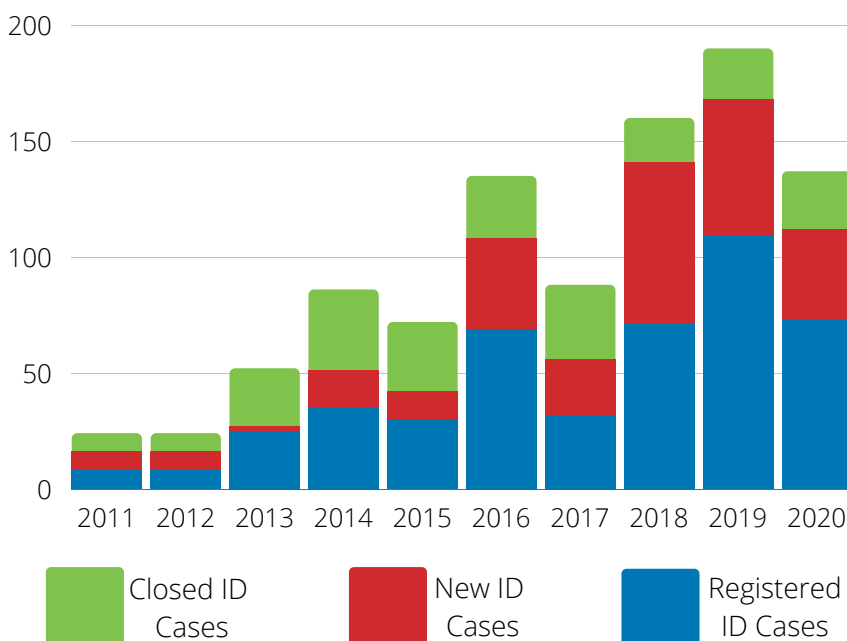
National ID Registration & Legal Aid



The lack of an official identity card affects almost every aspect of the lives of unregistered Moroccan children. They are assigned to a lifetime of **secondary citizenship** and unable to access social services to which they should be entitled to by birth. At Centre Amane, the process of ID Registration has become part of **our core social work practice** which supports the reintegration of families into society.



Success over the Years



25

**INDIVIDUALS
SUCCESSFULLY
REGISTERED**

98

**ID CASES
WORKED WITH IN
2020**

In 2020, 45% of cases came directly through Centre Amane, 13% from schools, and the remainder from various actors in the child protection sector.

CASE STUDY: FATIMA AND MAHA

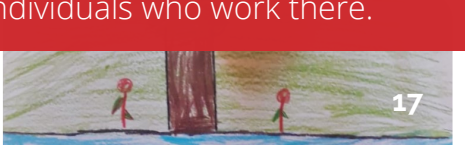
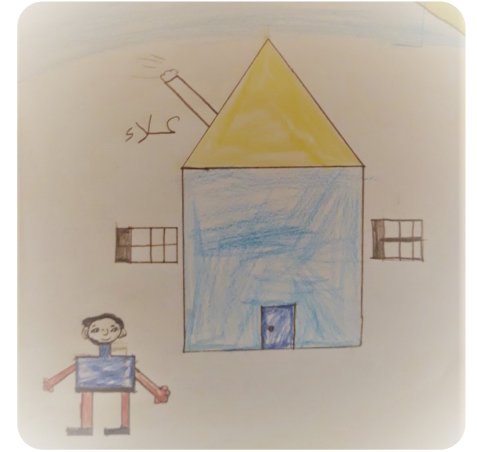
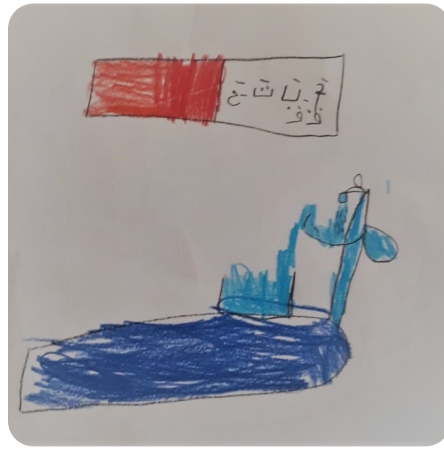


In 2020, we were able to close a case that we had supported for two years. This family consists of two girls – Fatima, aged 13, and her sister Maha, aged 8 – and their parents.

Initially, both Fatima and Maha were severely behind in their schooling. Maha was stuck in the first year of primary school, having repeated the grade three times, and Fatima was at risk of not entering middle school. Additionally, our family assessment found that the parents relationship was unstable.

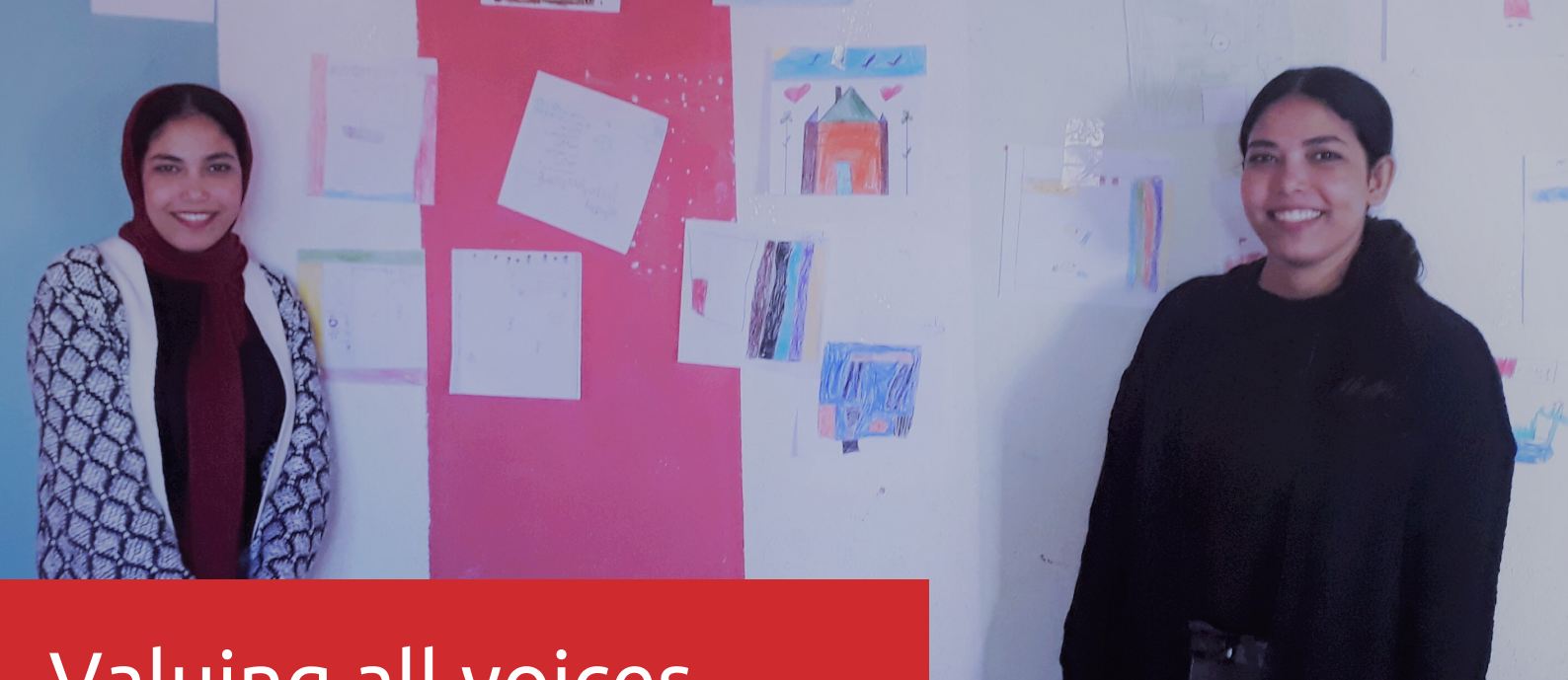
Over the last two years, we worked with Fatima and Maha at Centre Amane. They regularly attended the centre and received targeted one-on-one tutoring sessions. Both sisters were able to be integrated into judo through our partnership with the instructor. We also supported the parents through individual and family-based therapeutic sessions. The mother was also able to gain confidence and strategies for dealing with emotional stress in relationships through our women's group.

On closing the case we found Fatima and Maha now excel at school. We were able to support both parents to gain employment at the same farm. Working together has helped the parents build their bond and supported the family to gain the financial stability. Both girls are now able to live in a happy, safe, and supportive family environment.



PARTICIPATORY MONITORING AND EVALUATING

Taking a **participatory approach** is about allowing all actors engaged in the services of Centre Amane an equitable role in decision making. This allows us to **continue to better understand** the experiences of the children and families who use Centre Amane and the individuals who work there.



Valuing all voices

When developing the evaluation activities and conducting them, we practice **reflexivity**. This means the evaluation process is one where we acknowledge our position and the way it can shape what children, families, and staff share.

In 2020, children's activities were conducted by volunteers, Fatima-Zahra and Suaad (pictured above), who had informal relationships with children through the activities they had conducted with them throughout the year. Secondly, women's activities were conducted by a social worker for Bidaya Kawiya, a MCT/FAPE project external to Centre Amane. Lastly, our Programmes Officer met

with each staff member of Centre Amane to gain their individual, anonymised feedback on their programs before having the opportunity to discuss the collection of results as a team.

The evaluation activities consisted of:

- drawing activities with children (<12) at the centre
- 1 focus group with children (>12) at the centre
- 3 focus groups with 15 female caregivers
- 5 full day workshops with all staff

In 2021, we will use the results from our evaluation activities to...



We repainted the Centre Amane premises at the beginning of 2021



Begin literacy and numeracy classes for members of the women's group



Arrange French classes for children who have begun their schooling in French



Create guidebooks and training materials to better outline the work of Centre Amane



Foster Care

FAPE's foster care programme provides a family based alternative care solution for children who would otherwise be placed in institutional care. Within a family environment, we are able to ensure our foster children's access to health care, psychological support, and education. The foster care programme is made possible thanks to our sponsorship programme and our monthly sponsors who are committed to giving the gift of a loving home that every child deserves.

24

**CHILDREN
RECEIVED SOCIAL
WORK SERVICES**

8

**CHILDREN
IN FOSTER FAMILIES**

11

**SPONSORS
PROVIDING
CHILDREN WITH A
LOVING HOME**

CASE STUDY: ACHRAF



In January 2021, we placed a 10 year old boy, Achraf, with his new foster family. This was a wonderful development for Achraf but not without its challenges. Transitioning from institutional care to family-based care can be challenging, and Achraf had a particularly hard time expressing himself in his new placement at first.

To support Achraf's integration in this new environment, his social worker held daily one-on-one support sessions to do activities, work on homework, or just to talk. She simultaneously held weekly check in's with the foster family to come up with strategies together and ensure they felt equipped to respond to Achraf's individual needs.

In the past few months, Achraf has made incredible progress. He is learning to express himself better with others, and attends after school tutoring to improve his school work. The social worker continues to provide support to Achraf in collaboration with the foster family.



Bidaya Kawiya

www.bidayakawiya.ma

In partnership with UNOPS and funded by the European Union, FAPE and MCT implemented a programme working with young people preparing to leave residential care. We collaborated with local residential institutions to provide care leavers with individual social work support, professional guidance, and life skills training. In 2021, we have moved beyond our geographical region with a national impact through the launch of the Bidaya Kawiya website.



30

YOUTH 15-20
YEARS OLD

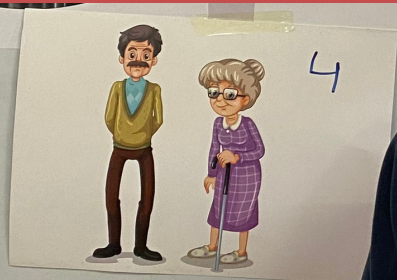
12

WORKSHOPS
ON ACTIVE
CITIZENSHIP

27

LIFE SKILLS
TRAININGS

CASE STUDY: MUSTAPHA



A year away from turning 18 years old, Mustapha had never thought about his future or what it meant to be an "adult". After starting his Pathways with his social worker, he began to think about his future, his passions and his goals. Through the Pathways process, the social worker was able to support Mustapha in his professional goals, integrating him in hairdresser training, which led to an internship and now a full time job.

Mustapha attended all the life skills training, expressing excitement in finally knowing how to open a bank account, wash his clothes, manage his time, find lodging, and more! Mustapha was also able to obtain his national ID card during the programme, a right of passage and an important avenue for him to be an active citizen of his community. In preparation for his 18th year, Mustapha is confidently getting ready to move out of the residential facility and begin living independently.

The Way: Towards hope and employment for Women and Youth

In 2020, FAPE and MCT began project The Way with the Middle East Partnership Initiative (MEPI). This program provides women in Souss-Massa with the social support required to access training and work. Women are provided the opportunity to gain the skills needed to support their children and career goals.



495

**ATTENDEES
AT AWARENESS
WORKSHOPS**

85

**WOMEN
REACHED THROUGH
PROGRAM**

47

**WOMEN
ENTERED SKILLED
TRAINING**

CASE STUDY: KHADIJA



Khadija was a 17 year old single mother with a child born out of wedlock. This meant she was estranged from her family and was living in a women's refuge. When we connected with Khadija we found that she was experiencing difficult working conditions as a house maid. Khadija felt isolated, alone, and powerless to change her situation. She had also not completed her schooling which made it difficult for to find her suitable employment. However, Khadija needed her official school certificates to enrol in school and this required her to reconnect with her family.

Our work with Khadija consisted of providing her and her family the opportunity to reconcile and accept Khadija and her daughter into the family. Khadija's family were supportive and we ensured Khadija was able to enrol in school. She is now studying hard, determined to enter university and provide herself and her daughter with the opportunity to thrive and be happy.



Capacity Building

Psychology of Child Protection



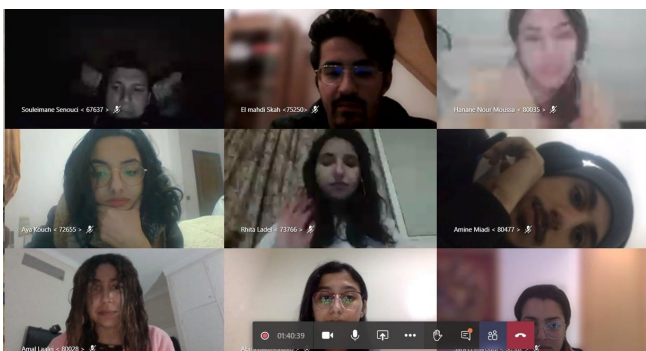
Khalqallah Abdenbi conducted a three part training session in partnership with UNICEF Maroc for child protection actors on working with children and families during the COVID-19 lockdown. Khalqallah is also the resident Psychologist for the Centre Amane team providing supervision as well as ongoing training.

Protective Behaviours

FAPE participated in a training workshop organised by British NGO **Strengthening Families and Children (SFAC)**. The training was on **Protective Behaviors** social work practices and ways to adopt the appropriate tools and strategies when working with children and families in difficult circumstances. The training was organised in partnership with the **Protective Behaviors Consortium** in the UK.



Holistic Relational Social Work



FAPE held a 3-part seminar series and workshop on active citizenship, community volunteering, and our approach to social work with students at **Al-Akhawayn University** in Ifrane. Over 150 students participated.





Advocacy

The Family is the Best Place for the Child to Thrive

In Partnership with the Ministry of Youth and Sport, we conducted:

- 4 training workshops with child protection professionals on ways of providing safeguarding services
- 6 workshops with **147** women on ways of accessing safeguarding services
- a provincial wide conference for over **80** legislators, professionals, academics, and general community members from Taroudant.



Collective Action

We are a lead steering committee member of a national Moroccan collective – **National Mouvement Enface Maroc** – consisting of approximately 200 members who work in child protection. We are also the joint founders and leaders of a regional collective – **Les Reasaux Associtatif De Promouvoir Les Doits De L'enfant Région De Souss-Massa** – consisting of approximately 100 members working in child protection in the Souss-Massa region.





Research Improving Practices

IMPact: Improving child welfare in Southern Morocco: engaging with local families and stakeholders to develop safeguarding and fostering policies

Foster care provision in Morocco remains at low levels. A high number of children are placed in institutional care settings over long periods, which can contribute to poor health and social outcomes for these children. It is estimated that there are over **480,000 children** in institutional care in Morocco (**1 out of every 30 children under 18**). Therefore, in partnership with Pr. Helen Snooks, Dr. Ashra Khanoum, and Pr. Anne John from Swansea University and Pr. Mary Elizabeth Rautkis from the University of Pittsburgh we aimed to:



Identify and co-produce safeguarding policies and protocols for children's services



Co-produce materials to build family resilience



Highlight the importance of foster care as an alternative to residential facilities



Communications for Development

In partnership with UNICEF Morocco, we implemented a number of activities aimed at better understanding the perceptions of community members on foster care and how to use the information collected to reinforce our communications strategies targeting family-based alternative care.



Focus Groups with women, men, child protection professionals, religious leaders, and youth in residential facilities.



Understand the perceptions of the community towards foster care, the obstacles / facilitators that exist within the Moroccan social context



Recommendations on how to develop a targeted communications strategy to recruit foster families and strengthen values of family-based alternative care within the community



Thank you to all of our wonderful volunteers over the last 10 years!

*Our work would not have been possible without your help and support.
We would also like to thank the support of the **Centre Amane Committee** !*

Abdellah El Abas
Shukria Abdalla
Paul Addae
Youssef Agnaou
Anna Aitken
Sanaee Alaoui
Ali
Hussa Alkuhaimi
Asmae Anddam
Fadi Baghdadi
Reggie Ballard
Sam Banner
Said Barak
Theo Barry-Born
Adeel Belorf
Kawthar Bennani
Faye Bercher
Mustapha El Berdyny
Lucilla Berwick
Rachida Bentanoute
Audrey Lee
Angela Lockwood
Elena Marino
Meriem Chaher
Virginie Mes
Anne-Marie Mills
Fatma Ozceuk
Jacob Perry
Laura Piggford
Felicity Roach
Soukaniya Zinouf
Linn Beulen

Manon Blankvoort
Lahsen Boukbir
Noel Browne
Georgina Chard
Tamar Chukran
Danielle Clully
Ellen Davis-Walker
David Deiss
Brittney Dennis
Naoufal Didi
Joanne Edwards
Fatima-Zahra Elbardini
Sauaad Elbardini
Sylvia Empson
Hasna Essakhi
Omar El Fayiz
Samuel Flax
Shaun Forde
Yvonne Freeny
Verity Roat
Laura Saarinen
Cody Sampson
Francesca Sangiorgi
Karen Scott
Samar Shakhrati
Montazar Shirali
Soufiane
Mahmahi Soufiane
Connie Wu
Hajar Zerradi
Hanane Zichout
Youssef Garaj

Yusuf Ghitan
Yusuf Guitay
Houba Guilaine
Elsa Gunnarsdottir
Mohmamed Hafssi
Samantha Halsall
Salima El Hamidi
Julia Hamilton
Hanane
Helen Higgins
Oubou El Hocine
Jessica Housely
Louella Hulliger
Ellen Iredale
Abdelaziz Jaafar
Ghizlan Kajbote
Hajar Korda
Marouane Lamine
Latifa
Richard Sutherland
Lynette Swanson
Jennifer Targontsidis
Chaima Touhtouh
Famke Vanderman
Jenna Waniek
Shaheidah Wanyek
Ben Ward
Rosalinda Whybrow

And many more....